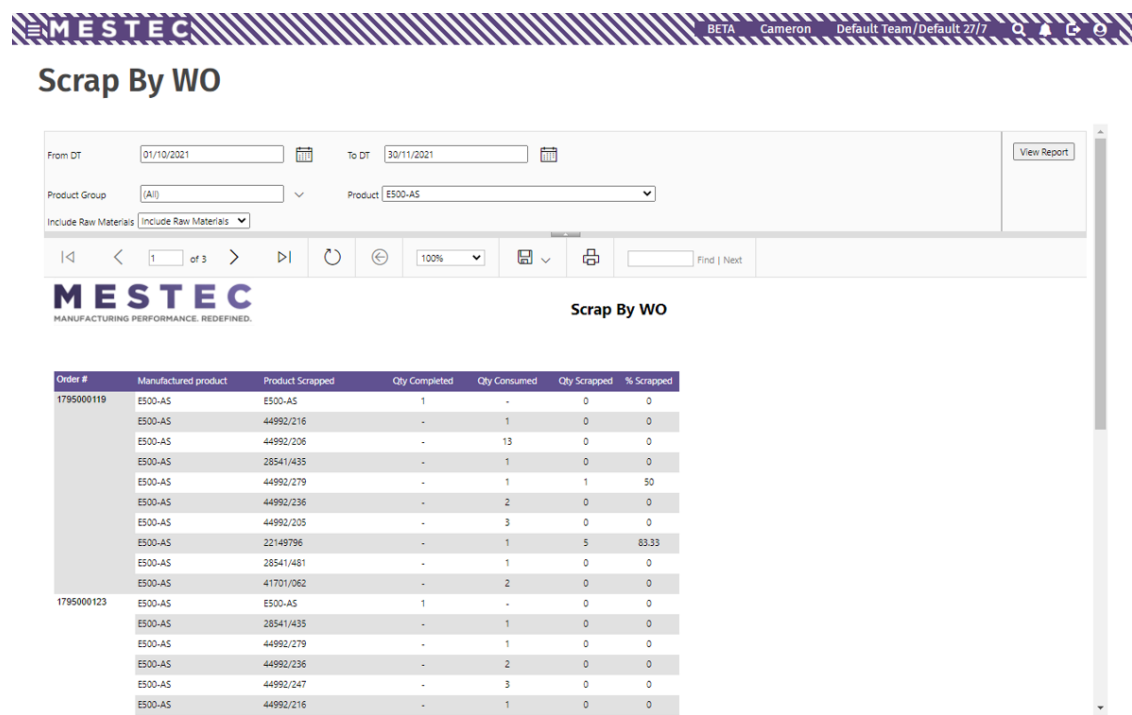


6.1.0

16/04/2024 11:43 am BST

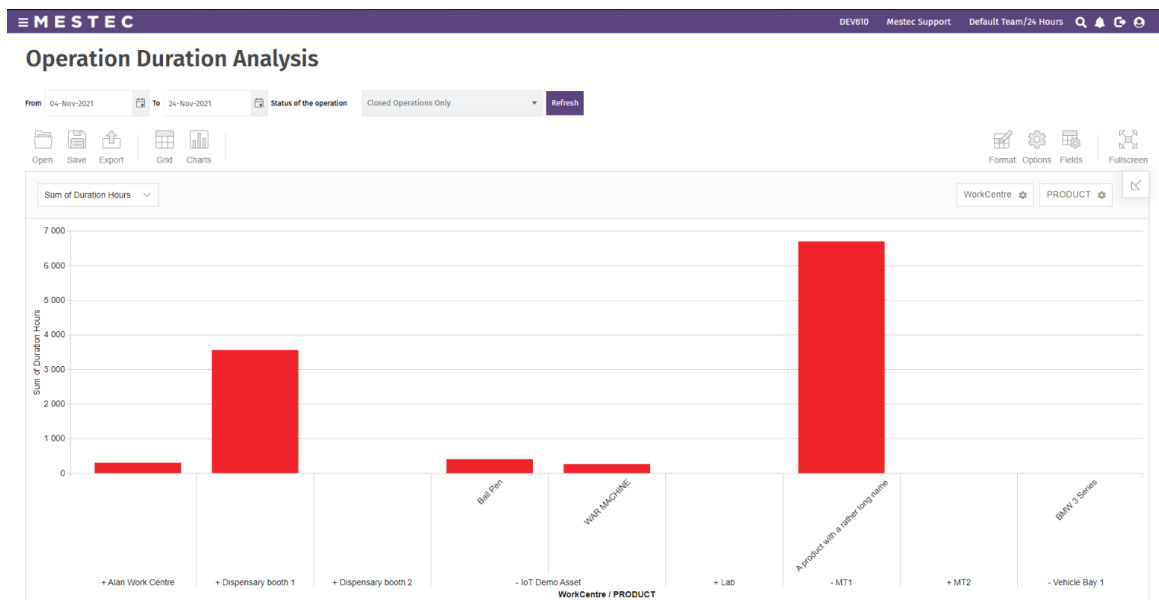
New Scrap by WO Report

Scrap by WO report can be used to analyse the scrap of works orders. Top level of the report displays the completions and scraps of the works order along with the scrap percentage of the order for the manufactured product. The second level (include raw materials) displays the items consumed and scrapped along with the scrap percentage for the products consumed. Available filters are works order completion date, and Works order product.



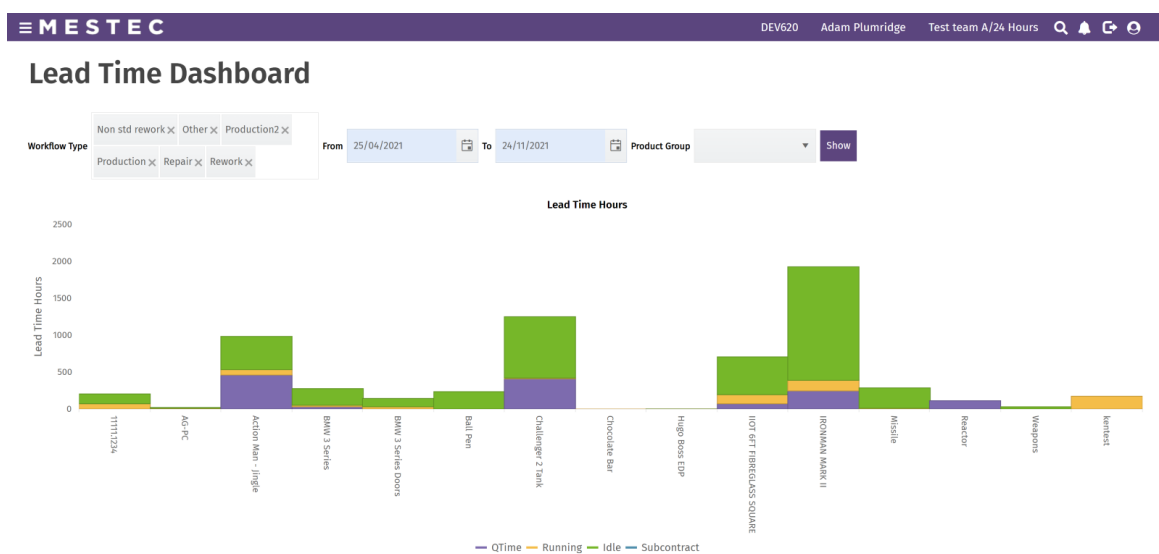
Pivot Grids Support Long Product Names and Serial Nos

In Mestec 6.1.0, the pivot grids now support product names and serial numbers of larger sizes in flat view. For example, the product name can scale up to 50 characters long.



Leadtime Dashboard

A new Lead Time dashboard has been introduced at MESTEC 6.1.0. The dashboard gives users visibility of the different causes of lead times: working time, queue time, idle time and subcontract.



Sites, Warehouses and Locations

The model for locations has been enhanced in MESTEC 6.1.0. It is now possible to model multiple sites within an organisation – each site can be split down into multiple warehouses and locations are linked to warehouses.

Location groups have been renamed to warehouse and contacts now belong to a specific site (rather than an organisation).

The new structure is as follows:

- Organisation
- Site

- Contacts
- Warehouse (previously location group)
- Location

MESTEC

DEV610Lucy IrishTest team L/24 Hours

Organisations

supply chain

Search

Organisations

NewEditDeleteCustomer/SupplierPropertiesSite

Organisation Name	Code	Comments
SUPPLY CHAIN NETWORK	A12	

Contacts

New

Address Type	Contact Name	Street	Town	County	Post Code	Country	Email	Phone	Comments	Site	Is...
Southern Hub Goods In	Southern Hub Goods In	High st	London							SOUTHERN HUB	Yes
Northern Hub Goods In / Out										NORTHERN HUB	Yes

MESTEC

DEV610Lucy IrishTest team L/24 Hours

Warehouse

New

Warehouse Name	Site
Warehouse A	NORTHERN HUB
Warehouse B	SOUTHERN HUB
Warehouse C	SOUTHERN HUB
Warehouse D	SOUTHERN HUB

Locations

Search

Search for a location here ...

Search

NewImport

SUID	Name	Description	Warehouse
3A-A1	3A-A1	KEY ING FP PDR	Warehouse A
3A-A2	3A-A2	KEY ING FP PDR	Warehouse A

Transfer Orders

MESTEC’s dispatch order functionality has been extended to support other shipment types in addition to shipments to customers. The new dispatch types are:

- Internal Transfer: shipments to other sites within the organisation
- Return to Vendors: shipments to suppliers
- Subcon: shipments to sub-contractors

If a dispatch order is created as an internal transfer order then when an item is dispatched, its status is updated to show as “in transit”.

The quantity can then be confirmed as received and put away in a new location in the destination site with the status returning to “available”.

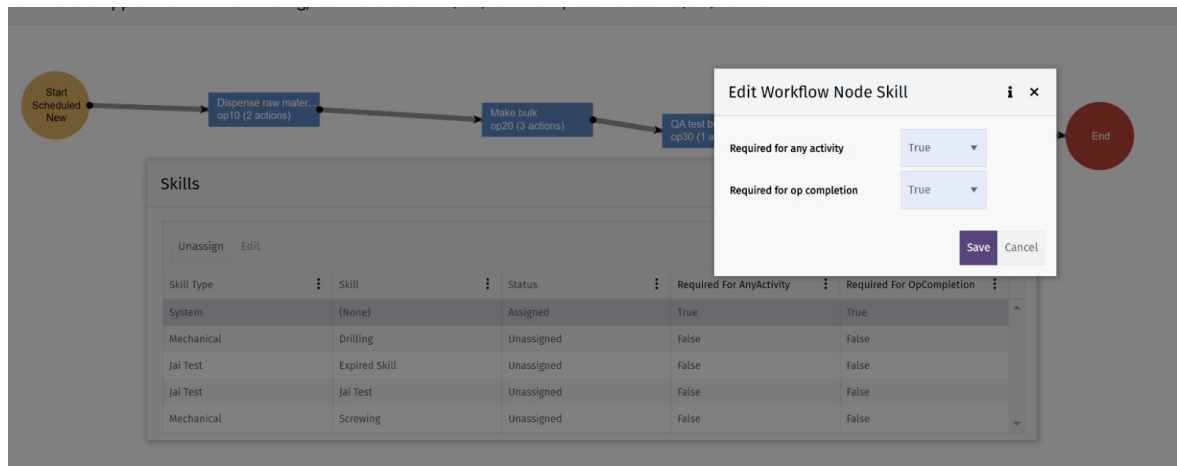
Workflow Operation Skills Enhancement

Pre version 6.1.0 the workflow designer gave you the ability to set a skills requirement against a task. This would prevent any user without this skill from booking onto the operation in question.

At 6.1.0 there is an additional option. It is now possible to specify what level of control the skill requirement brings:

- Skill is required for any activity on the operation
- Skill is only required to complete the operation





7. Improvements to Max Attendance Clock Out and Log Out

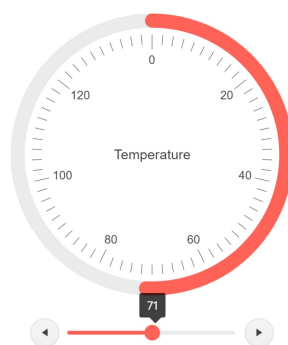
If MESTEC determines a clock out for the user is required, previously they would have automatically been logged out of the system during the clock out process.

In 6.1.0, while the clock out will still be processed when required, the user will instead remain logged into MESTEC and just be notified that their attendance record has been ended.

This allows users that have logged into MESTEC when not in attendance (perhaps when viewing reports remotely) to continue working. It also enables a user that has returned to site after a period of being away after having forgotten to clock out to re-clock in without having to reauthenticate.

Introduction of Circular Gauge Gadget

The MESTEC suite of gadgets continues to grow. Application screens now support the new circular gauge and this widget is likely to be involved with new core product and custom screens going forward.

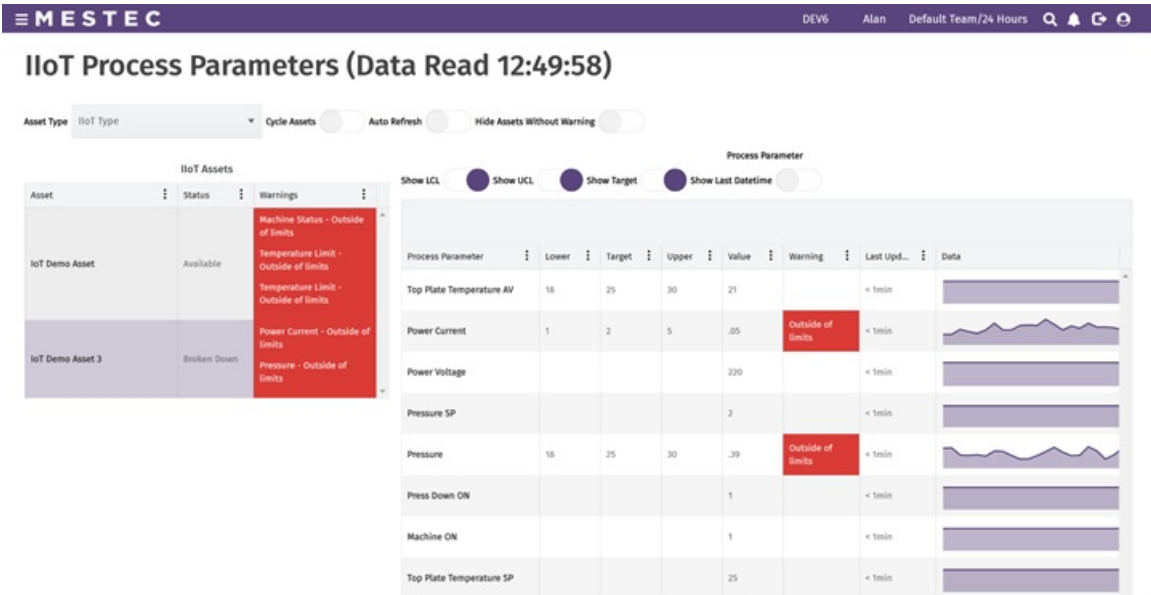


Goods Receipts Custom Extension Support Added

The Goods Receipt feature within MESTEC has been extended to support custom extension calls. This capability allows for custom functionality to be triggered at the point of receiving goods.

Further IoT Changes

In 6.0.1 MESTEC has continued to expand on the new IoT capability, including further IoT performance improvements, new columns for indicating the last time the data was received from the appropriate sensor and the capability to filter process parameter history by data range.

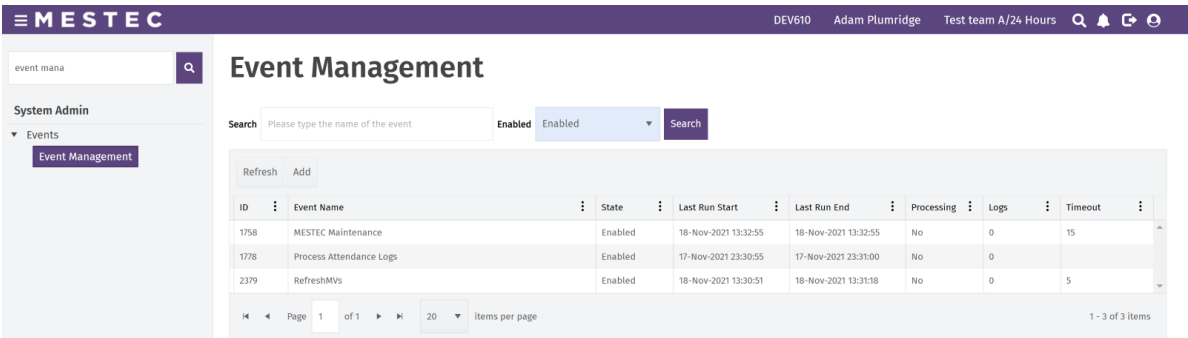


NetSuite WO Completions

MESTEC now supports transferring Works Order Completions data to NetSuite. This interface provides synchronisation via a MESTEC background task and ensures that works orders that are completed in MESTEC are also closed in Netsuite.

Event Management - Improved Event Filtering

The Event Management screen has been enhanced to only show enabled events by default. This change allows for easier navigation and archiving of older events.



Shop Floor Moves Enhancements

The shop-floor moves screen within the MESTEC workstation has been enhanced to work of a device based filter instead of forcing a work centre selection.

New Job Priorities User Interface

The Schedule Manager screen now allows users to configure a customised list of Job Priorities.

