

# 6.0.0

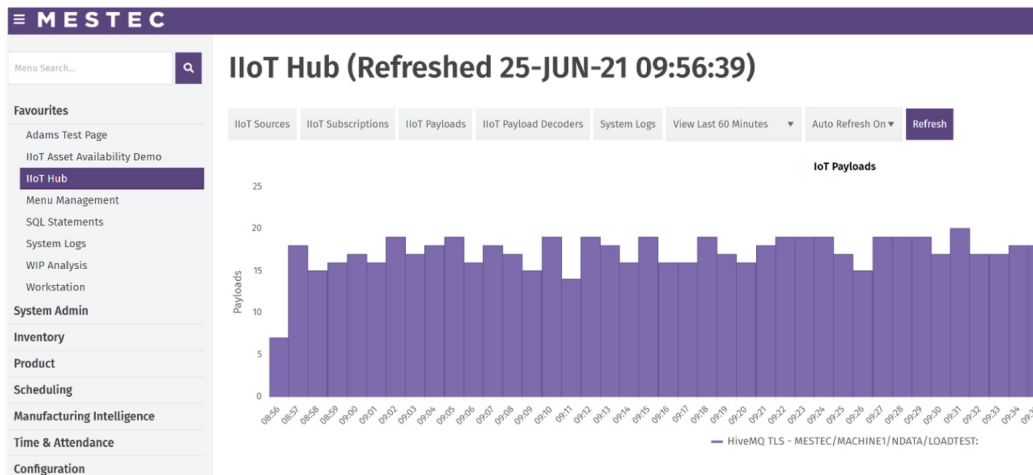
16/04/2024 11:43 am BST

## IloT Connectivity (Industrial Internet of Things)

MESTEC IloT enables on-premise Production Counts, Asset Status Changes, Environment Variables, Process Parameters and more to be communicated to MESTEC and processed in real-time.

With multiple IloT projects already underway, an example of the business challenges that can now be taken on include:

- Text alerts on exceeding process parameter limits
- Dashboard(s) to display temperature and pressure against expected values
- Real time machine status data:
  - Improved OEE
  - Automated status changes in MESTEC



## ASC (Access Supply Chain) Interfacing

Version 6 introduces closer integration with Access Supply Chain (ASC) through ASC API tables.

## NetSuite Integration

Version 6 sees the introduction of the new MESTEC/NetSuite interfacing capability via the NetSuite public API.

```
28 | 2 references | Arturs Kupce, 62 days ago | 1 author, 1 change
29 | public static RecordRef GetRecordRef(ManufacturingOperationTask op)
30 | {
31 |     // record Ref
32 |     RecordRef recordRef = new RecordRef();
33 |     recordRef.type = _ItemType;
34 |     recordRef.typeSpecified = true;
35 |     recordRef.name = op.title;
36 |     recordRef.internalId = op.internalId;
37 |     recordRef.externalId = op.externalId;
38 |     return recordRef;
39 | }

40 | 1 reference | Arturs Kupce, 62 days ago | 1 author, 1 change
41 | private static SearchResult GetOperations(NetsuiteIntegrator integrator,
42 |     ManufacturingOperationTaskSearchBasic transactionSearchBasic)
43 | {
44 |     ManufacturingOperationTaskSearch opSearch = new ManufacturingOperationTa:
45 |     opSearch.basic = transactionSearchBasic;
46 |     return integrator.Service.search(opSearch);
47 | }
48 | }
49 | }
50 | }
```

## RCCP (Rough Cut Capacity Planning)

In this release we bring you our new Rough Cut Capacity Planning tool. This provides you with a framework to analyse longer term demand vs capacity based on the orders, workflows and resources configured within MESTEC.

You also have the ability to manipulate different scenarios of capacity and demand, helping you to identify any potential resource constraints well in advance and see the effect of resource capacity changes (e.g. new machines), look at longer term forecasted volume or demand changes (e.g. new products / promotions).

### Capacity Scenarios

Build as many capacity scenarios as you wish for configurable periods by:

- Importing capacity (including shifts) from APS module
- Importing from a spreadsheet
- Manually manipulating data directly in MESTEC

Capacity calculations take into account the effect of spreading demand across a range of machines with different efficiencies.

**MESTEC** DEV660 Adam Plumridge Test team A/Day

## Capacity Scenario Hours

Capacity Scenario: Default | Scheduling Resource Group: [ ] | From: 25/06/2021 | To: 25/06/2022 | Refresh

Import | Import from APS | Manage Capacity Scenarios

CAPACITYSCENARIO	RESOURCE	JULY_2021	AUGUST_2021	SEPTEMBER_2021	OCTOBER_2021	NOVEMBER_2021
Default	Adam Work Centre 1	10	10	0	0	0
Default	Bay Mounting Station A	0	0	0	0	0
Default	Bay Mounting Station B	0	0	0	0	0
Default	Bay Mounting Station C	0	0	0	0	0
Default	Cell 1	0	0	0	0	0
Default	BST Oven	0	0	0	0	0
Default	JM Work Centre	0	0	0	0	0
Default	Tony Work Centre	0	0	0	0	0
Default	Lab	0	0	0	0	0
Default	Space Shuttle - Aero Test	0	0	0	0	0
Default	Adam Work Centre 3	0	0	0	0	0
Default	Labour Pool A	0	0	0	0	0
Default	Test	0	0	0	0	0
Default	This is Test AK	0	0	0	0	0
Default	Dryers	0	0	0	0	0
Default	Sealing Station HD	0	0	0	0	0
Default	PHTESTWC	0	0	0	0	0
Default	OtherOven2	0	0	0	0	0
Default	AK-1	0	0	0	0	0
Default	Hand Pick 14	2	3	2	1	2
Default	Alan Work Centre	0	0	0	0	0
Default	kentest	0	0	0	0	0
Default	MT1	0	0	0	0	0
Default	Vehicle Bay 1	80	0	0	0	0

## Demand Scenarios

Build future forecasted demand scenarios for specific products / workflow types by:

- Importing from a spreadsheet
- Manually manipulating within MESTEC directly

**MESTEC** DEV660 Adam Plumridge Test team A/Day

## Demand Scenario Quantities

Demand Scenario: Demand 1 | From: 25/06/2021 | To: 25/06/2022 | Refresh

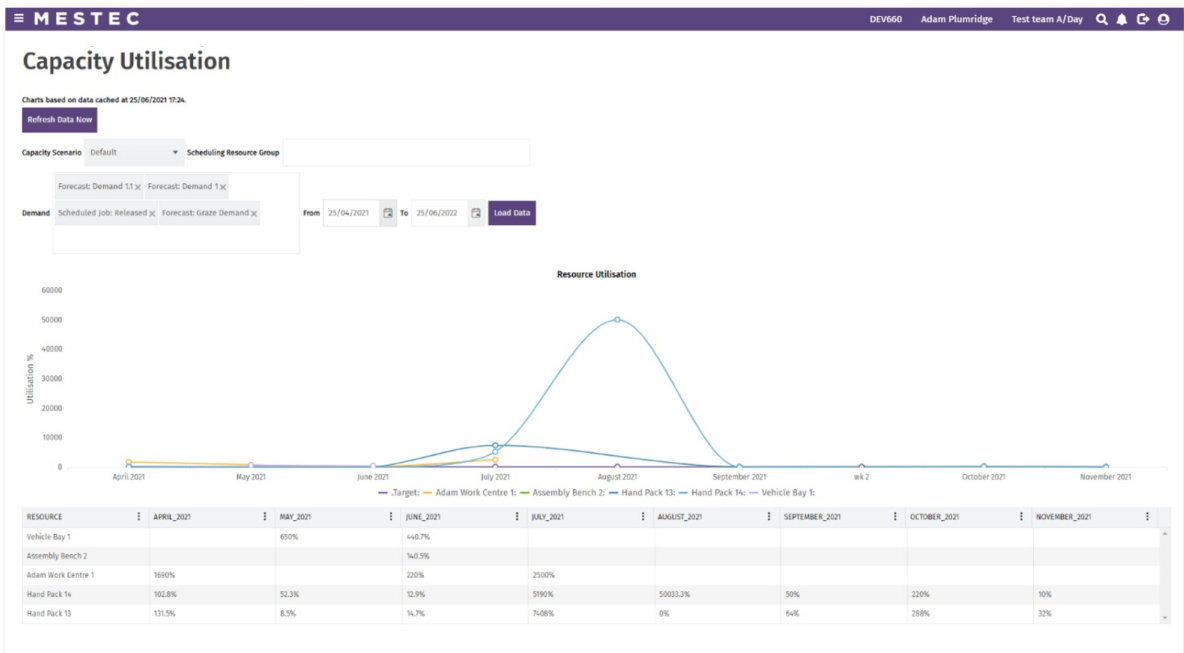
Workflow Type: Production | Product Group: [ ] |  Include not forecasted

Import | Manage Demand Scenarios | Add Forecast

DEMANDSCENARIO	PRODUCT	WORKFLOWTYPE	VERSION	JULY_2021	AUGUST_2021	SEPTEMBER_2021	OCTOBER_2021	NOVEMBER_2021
Demand 1	000547.55	Production	1	114	0	0	0	0
Demand 1	001460.80.80C	Production	Q1	101	0	0	0	0
Demand 1	001460.80.80C	Production	T2	56	0	0	0	0
Demand 1	10101	Production	1	0	100	0	0	0
Demand 1	14AA620CP-MP-T8	Production	2	10	2	0	0	0
Demand 1	14AA620CP-MP-T8	Production	V3	10	0	0	0	0
Demand 1	14AA620CP-MP-T8	Production	1	2	5	0	0	0
Demand 1	14AA620CP-MP-T8	Production	V1	2	5	0	0	0
Demand 1	14AA620CP-MP-T8	Production	3	10	10	0	0	0
Demand 1	14AA620CP-MP-T8	Production	V4	5	5	0	0	0
Demand 1	14AA620CP-MP-T8	Production	4	10	0	0	0	0
Demand 1	605FP	Production	2	2	0	0	0	0
Demand 1	605FP	Production	1	2	10	0	0	0
Demand 1	AP Product 1	Production	1	0	0	0	0	0
Demand 1	AP Product 5	Production	A1	10	0	0	0	0
Demand 1	Abs Job Test	Production	transfer test	10	20	0	0	0
Demand 1	Abs Purge Test	Production	Copy test	0	10	0	0	0
Demand 1	Abs Test	Production	1	10	20	0	0	0
Demand 1	Adam Product 1	Production	SA	5	0	0	0	0
Demand 1	Adam Product 1	Production	AA8	10	20	0	0	0
Demand 1	Adam Product 2	Production	1	44	0	0	0	0

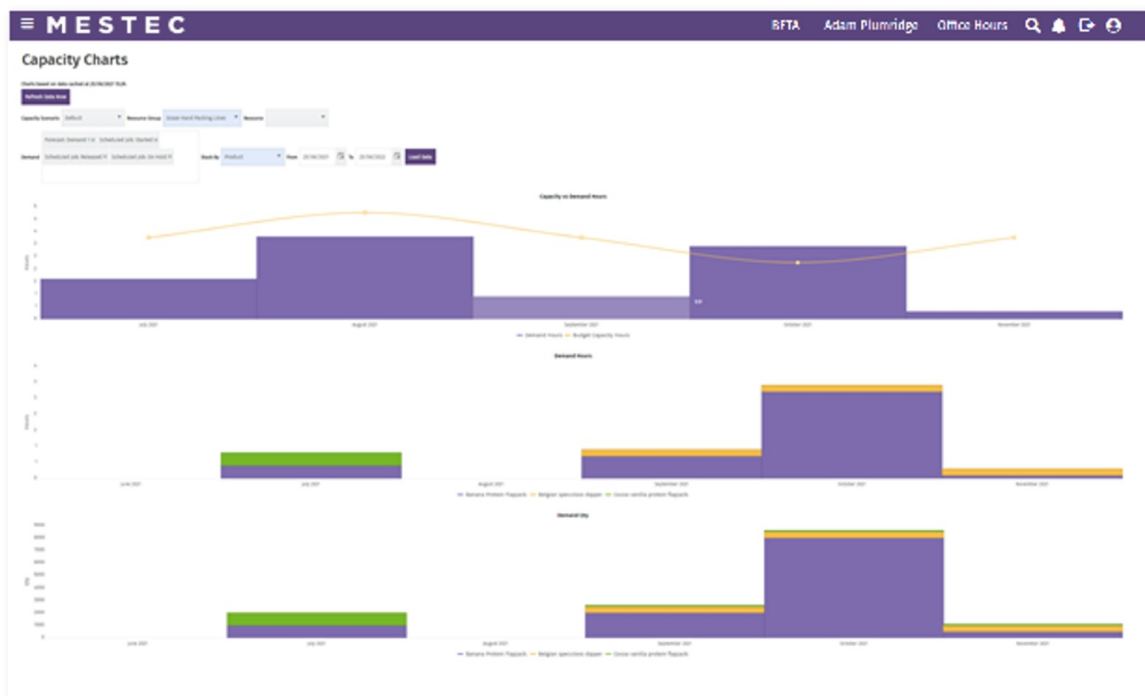
## Analyse – Capacity Utilisation

Select the forecast /orders you want to analyse vs the resources you need to see capacity utilisation.



## Analyse – Capacity

Select the orders / forecast vs the resources you want to analyse and see their effect on overall capacity vs demand. See the breakdown of demand based on product hours and quantity to see where pinch points are coming from.



## Issue Tracking Improvements

Version 6 brings with it a more powerful issue tracking tool, which now has the capabilities to directly control stock / works orders.

Issue types can be configured with different profiles so that essential information is gathered depending on the requirement. e.g. for quality issues vs safety issues vs maintenance issues.

Issue changes and items linked are now revision controlled, so that history can be retrieved.

**Edit Issue Type** i x

Name: Safety

Description: This is the Safety Issue Type.

Parent Issue Type: [dropdown]

Require Title: Hidden

Require Description: Hidden

Require OwnerID: Hidden

Require External Ref.: Hidden

Require Quantity: Hidden

Require Team: Hidden

Require Parent IssueID: Hidden

Require Rank: Hidden

Require Pcnt Complete: Hidden

Require Priority: Hidden

IsQAHold

Save Cancel

## QA Hold Issues

The issue tracker now can be used to actively control items / works orders

## Is QA Hold Issue

If an issue type is designated IsQAHold (see above), this allows the following choices that can be configured on an issue by issue basis:

**Edit Issue** i x

Issue Type: Quality Reason: [dropdown]

Status: Open Resolution: [dropdown]

Due: 19/05/2021 [calendar icon]

Item Scope: [dropdown menu open]

Save & Proceed to Issue Item Save & Close Cancel

Open	Safety			17-May-2021	High
Open	Big Is			19-May-2021	High

---

## Item

If the Issue raised is linked to specific item / specific group of items, these items will be placed on hold if they are not in WIP, or blocked from being booked onto in the workstation if they are in WIP. To release the hold, either remove the link or close the issue.

## Job

If the issue is linked to a specific job / group of jobs these jobs will be placed on hold. When the link is removed or the issue is closed the job will be released again.

## Job Operation

If the issue is linked to a specific job operation within a job, this job operation will be placed on hold (e.g. if the job is currently at op10 and you want it to be able to continue to op90 but no further, you can link the issue to op90). If you remove the link or close the issue, the job operation will be taken off hold.

## Node

If the issue is linked to a specific node(s) within a workflow, all job operations for this node across all active jobs will immediately be placed on hold. In addition, for any new jobs created using this workflow the relevant job operations will be put on hold. If you remove the link or close the issue all related job operations will be taken off hold.

## Item operation

If the issue is linked to a specific item operation (e.g. where you have a serialised job where only one item on the job is at fault) the operator will be prevented from booking onto this operation for this item within the workstation. If you remove the link or close the issue this will be removed off hold.

## Note on auto release

Note that in all of the scenarios above, items will only be reverted to being off hold if the hold status is still linked to the issue i.e. it will never automatically release if the entity does not have a hold reason 'linked to QA Issue'. If multiple issues are linked to one entity, all issues have to be closed before the entity is released.

## Item BOM Revision History

BOM Items in MESTEC now record revision history.

## Product BOM Candidate Version

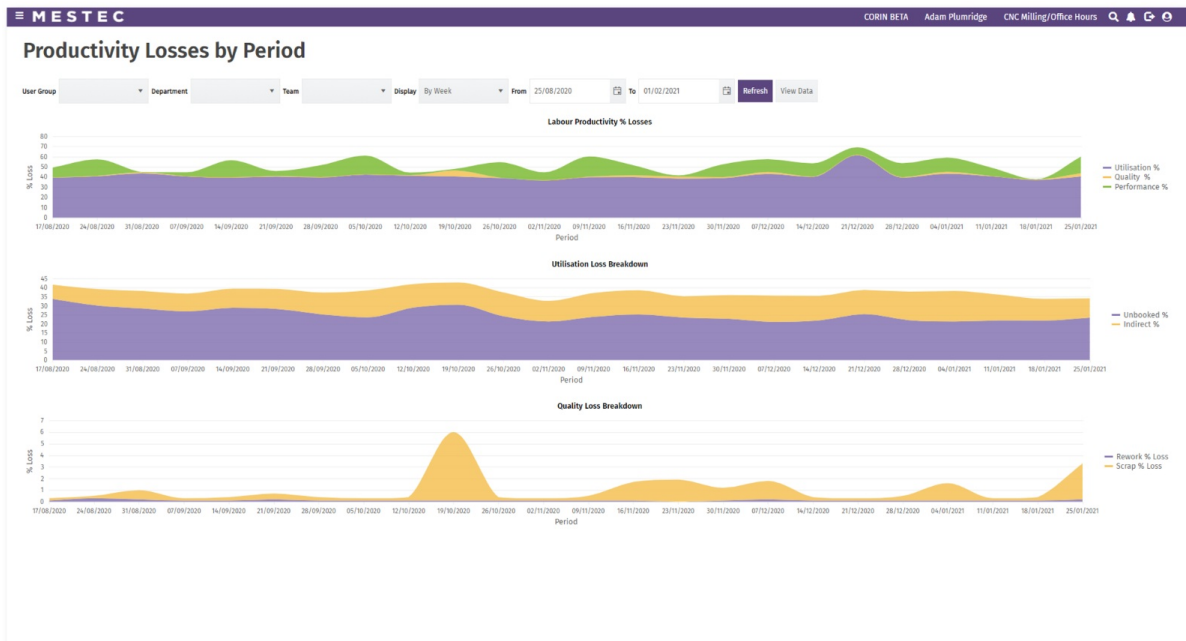
Version 6 brings with it the ability to control child product versions within BOM Slot candidates, ensuring that the correct versions of a child product are consumed to the parent.

An additional field has been added in the BOM Slot Candidates allowing you to specify the authorised / default versions of the child product – these are then controlled within the workstation.

## Reports and Dashboards

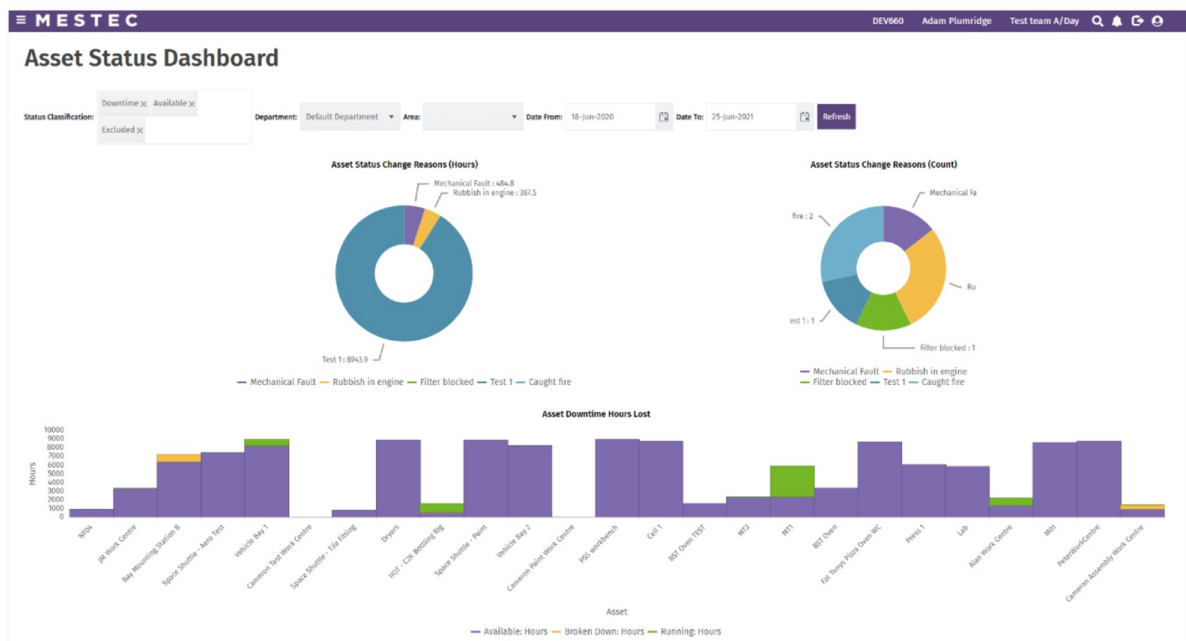
### Productivity Losses by Period Report

The “Productivity Losses by Period” dashboard allows factories to understand the causes of labour productivity loss and how the different factors change over time.



### Asset Status Dashboard

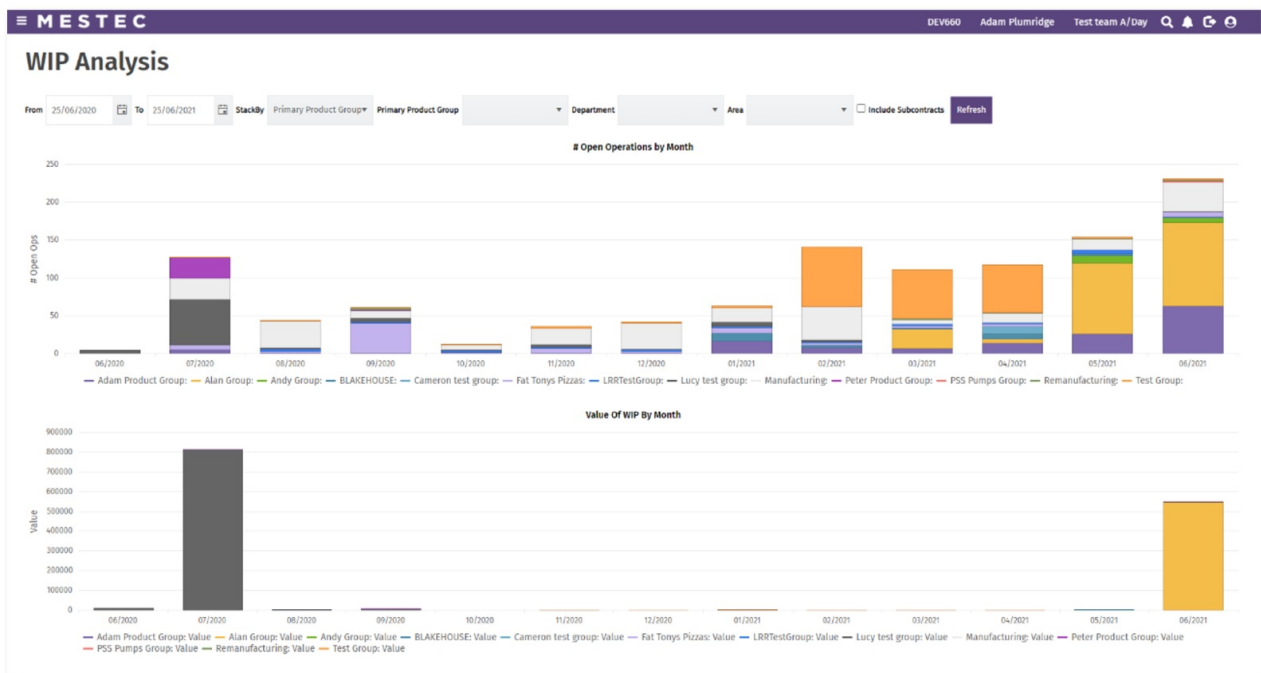
The “Asset Status Dashboard” gives a summary of the causes of machine downtime. It shows losses both in terms of the hours lost and the number of incidents. The performance of different assets are compared to help identify focus areas for improvement.



### WIP Analysis Dashboard

The “WIP Analysis” dashboard helps provide tools to understand where WIP is building up in your factory. WIP is

analysed both in terms of value and quantities and can be categorised in variety of factors (department, area, work centre, activity, product, product group...) to identify patterns and improvement opportunities.



## APS Integrated within Core MESTEC Web Application

The MESTEC APS extension (Advanced Planning and Scheduling) is now integrated within the core MESTEC web application.

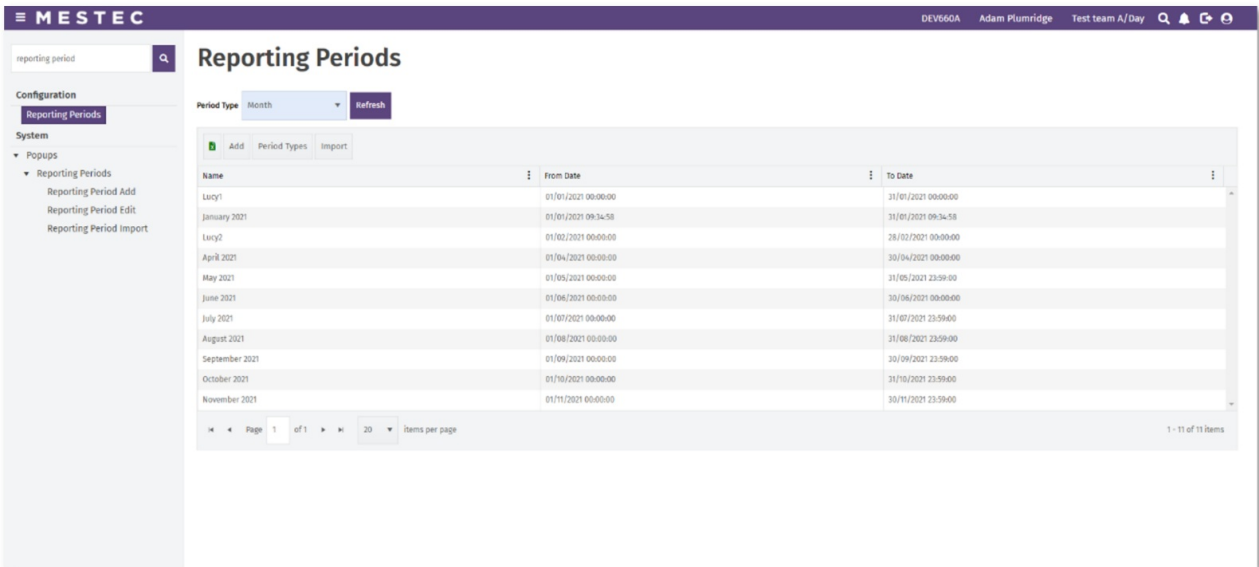
## Quick Book-On to Jobs

The new Workstation auto book-on capability now allows for work to be automatically booked on to if the result of the serial number search is a single record and the serial number matches exactly. This feature needs to be switched on by request.

## Reporting Period Import Tool

The reporting periods screen now has an import function, allowing you to quickly import period configuration from a csv file.





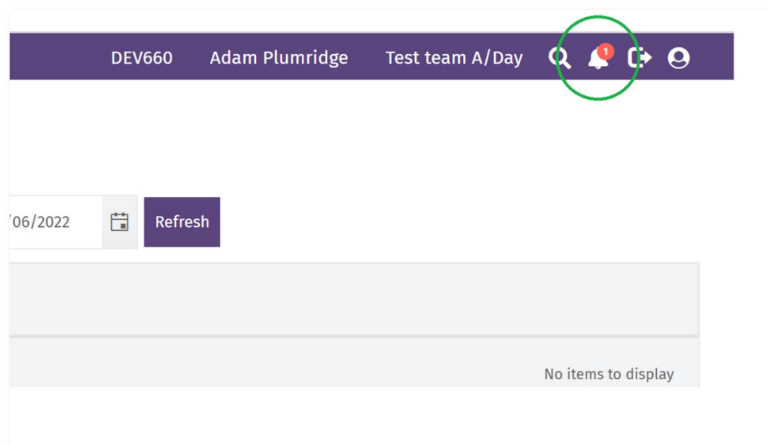
## Dynamic Document URLs

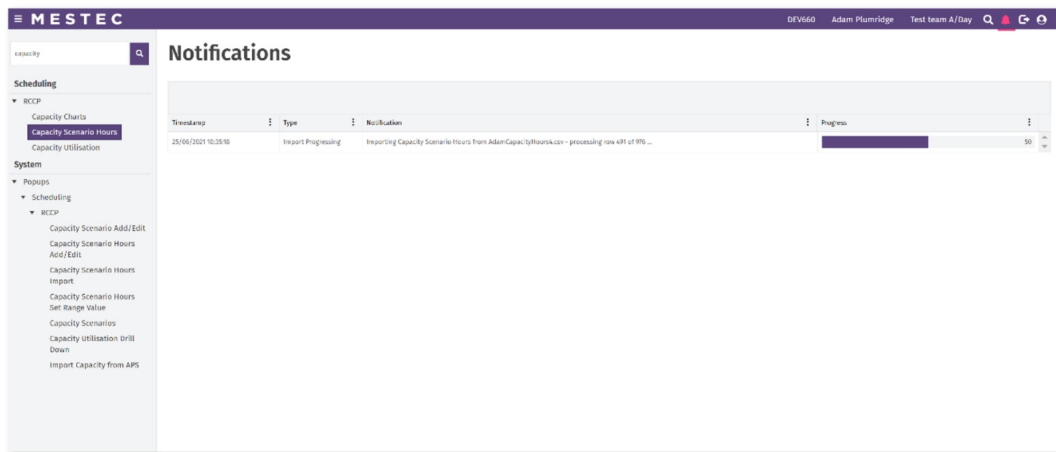
URLs used to reference documents within the workstation can now be calculated in real-time to include information related to the product being worked on. An example of this is which can now include the product or item version number of the item being worked on. This means a URL such as [https://mylocalserver/docs/doc1-\[VERSIONNO\].pdf](https://mylocalserver/docs/doc1-[VERSIONNO].pdf) can be resolved by MESTEC at the time of viewing the document to <https://mylocalserver/docs/doc1-A1.pdf>, reducing the configuration required in the system.

## Notifications

Notifications enable users to be made aware of background events and tasks such as upgrades, imports, background events and more.

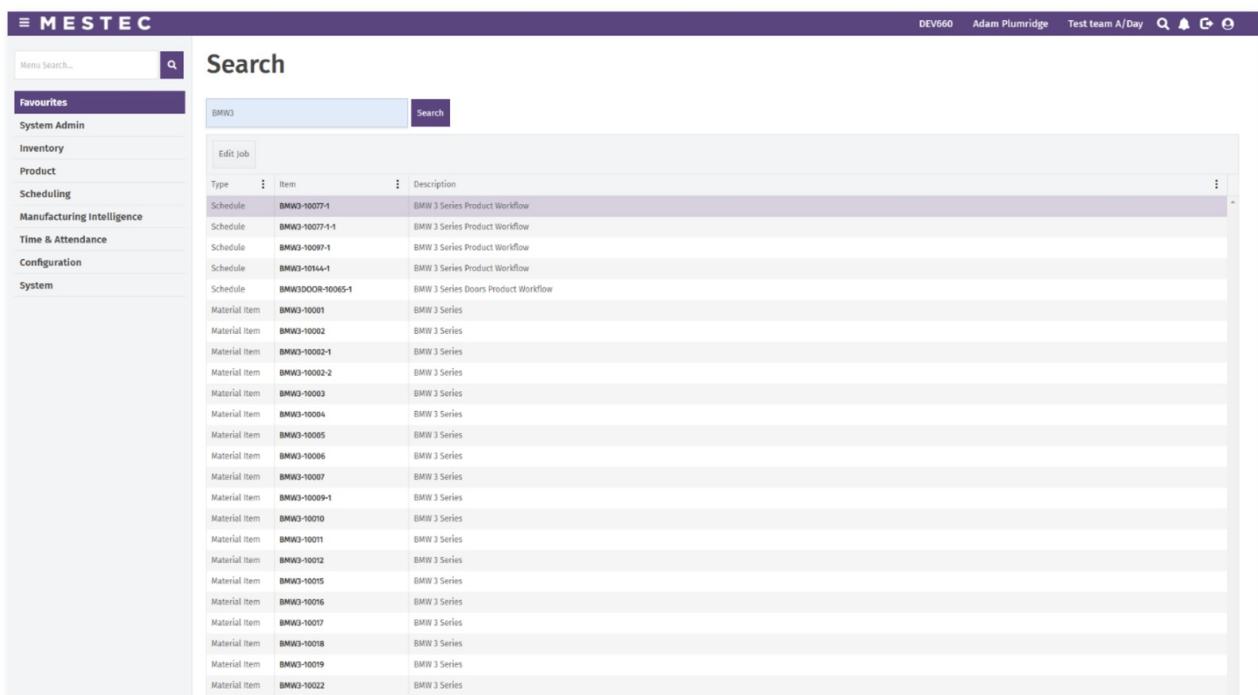
Previously where an import would take several minutes and show a busy indicator while it was processing, the application now allows the user to continue to use MESTEC and notifies them when the background task is complete.





## Application Search

MESTEC now allows the application user to perform a system wide search for products, users, jobs, material and more using the magnifying glass in the top right-hand corner of the screen.



## Input Controls, Grid Cells and Column Headers Now Adhere to Browser Language Settings

As part of the introduction into language support for the MESTEC application, numeric and date fields in grids and input controls now adhere to the language settings applied to your browser.