

# Menu Items and Pages

29/10/2024 11:57 am GMT

[Relates to version](#)

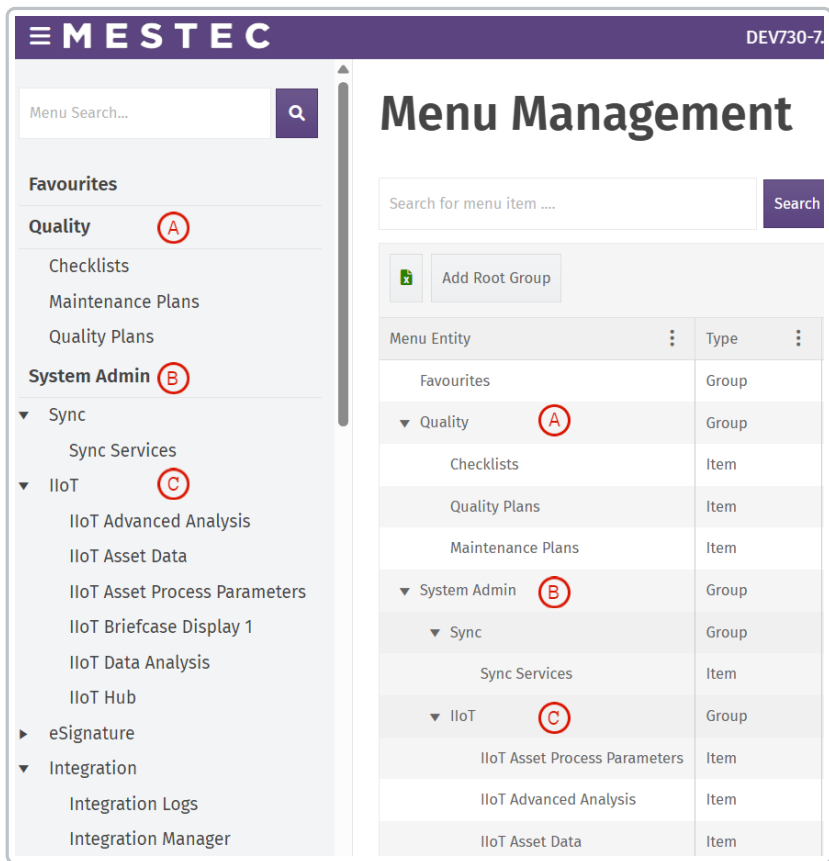
Tags: [7.3](#)

The **Menu Management** page shows you all the screens and their structure in the system. The image below shows how a menu item may appear in the left-hand menu and the **Menu Management** screen.

There's a distinction between root groups (A and B) and sub-groups (C). The left-hand menu items appear as groups in the **Menu Management** structure.

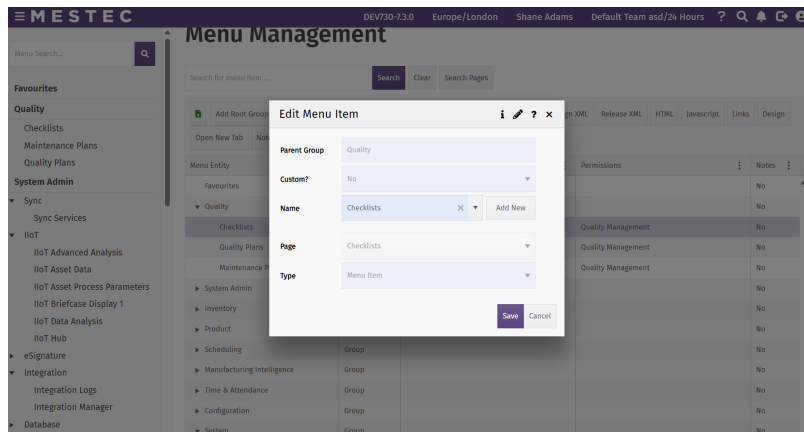
There are a few fundamentals about how pages and popups work in MESTEC:

- Every screen in MESTEC, full screen or popup, is a page.
- Most pages are referenced by a single menu item but it is possible to create multiple menu items that references the same page.
- Menu items can be launched either by clicking on the menu or from a button on a page (popup).
- Menu items belong to groups that provide structure to the left-hand menu.
- Menu items that are only intended to be accessible as a popup are placed in the popups group and are hidden from the left-hand menu.

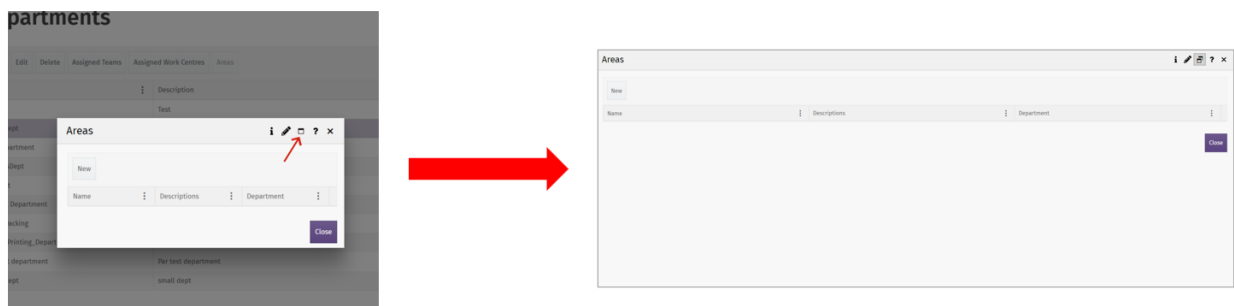


## Functions and appearance

- A popup opens as a modal.



- The modal is closed by taking some action or clicking the (X).
- Typically, a popup has context in the sense that it will be invoked by a page that requires the popup. Some fields in the popup may be prepopulated such as the **Name** field in the image above.
- Pages are searchable and accessible from the left-hand menu.
- Poppups are not searchable from the left-hand menu but are searchable from the **Menu Management** search.
- Poppups support nesting allowing a popup to invoke another popup, and so on.
- Some popups can be opened in full screen.



- Some pages have dual functions and can be a page and a popup. These are searchable.